

WHAT'S ON

LONDON 2017-2018

42ND STREET

Peggy Sawyer is fresh off the bus from small-town America and just another face in the chorus line on Broadway's newest show. When the leading lady gets injured, she might just have the shot at stardom she's always dreamed of. An all-singing, high-kicking cast brings to life classics like We're In The Money, Lullaby of Broadway, I Only Have Eyes For You, 42nd Street.

SCHEDULE: Monday – Saturday. Dark Sunday.

VENUE: Theatre Royal Drury Lane, Catherine St, WC2B Nearest Tube: Covent Garden

MUSICAL



ALADDIN

Featuring the timeless songs from the classic film including A Whole New World, Friend Like Me and Arabian Nights along with new music written for the production, a legendary creative team, a fabulous cast and orchestra, and over 350 costumes brings to theatrical life Disney's world filled with beauty, comedy and breath-taking spectacle that can't be missed.

SCHEDULE: Monday – Saturday. Dark Sunday.

VENUE: Prince Edward Theatre, Old Compton St, W1 Nearest Tube: Leicester Square

MUSICAL



ALICE'S ADVENTURES IN WONDERLAND

The critically acclaimed multi-sensory experience created specifically for children aged 5-10! Alice is missing in Wonderland and it's up to you to find her. On entering Wonderland whether you 'Eat me' or 'Drink Me' will determine your unique path. Tumble with the Tweedle twins; follow the White Rabbit and take Tea with the Hatter at the Maddest Tea Party of all!

SCHEDULE: Varies. Enquire or visit online calendar.

VENUE: The Vaults, Waterloo, Launcelot St, SE1

EVENT

Recommended for 5-10 years of age.

Nearest Tube: Waterloo



ALICE'S ADVENTURES UNDERGROUND

Fall deep into The Vaults, hidden beneath Waterloo Station and lose yourself in a land far removed from our own. But this isn't Alice's adventure, it's yours...revel in the 'Wonderland of your imagination recreated before your eyes' (Guardian) finding yourself at the centre of the story piecing together the puzzle searching for Alice who has been lost in looking glass.

SCHEDULE: Tuesday – Sunday. Dark Monday.

VENUE: The Vaults, Waterloo, Launcelot St, SE1

EVENT

Recommended for aged 11 and above.

Nearest Tube: Waterloo



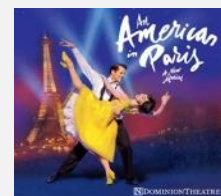
AN AMERICAN IN PARIS

The breathless romance and dazzling spectacle of Broadway's triumphant, Tony® Award-winning hit comes to London. An American GI strives to make it as a painter in a city bursting with hope and possibility, romance of art, friendship and love. This stunning reimagining features some of the greatest music ever written.

SCHEDULE: Monday – Saturday. Dark Sunday.

VENUE: Dominion Theatre, Tottenham Court Rd, W1P Nearest Tube: Tottenham Court Rd

MUSICAL



ANNIE

Set in 1930s New York during The Great Depression, brave young Annie is forced to live a life of misery at Miss Hannigan's orphanage. Her luck soon changes when she's chosen to spend a fairytale Christmas with famous billionaire, Oliver Warbucks. Meanwhile, spiteful Miss Hannigan has other ideas and hatches a plan to spoil Annie's search for her true family...

SCHEDULE: Wednesday – Monday. Dark Tuesday.

VENUE: Piccadilly Theatre, Denman Street, W1

MUSICAL

Through 18 February.

Nearest Tube: Piccadilly Circus



APOLOGIA

Stockard Channing stars as Kristin Miller, a firebrand liberal matriarch and eminent art historian. A birthday gathering should be a cause for celebration but the recent publication of her memoir bring about questions regarding the sacrifices she has made and about the price paid by those she loves. A witty, topical play about generations, secrets, and warring perspectives.

SCHEDULE: Monday – Saturday. Dark Sunday.

VENUE: Trafalgar Studios, Whitehall, SW1A

COMEDY

Through 18 November.

Nearest Tube: Charing Cross



WHAT'S ON

LONDON 2017-2018

BIG FISH

What is it to really know your own father? Meet Edward Bloom, (Kelsey Grammer), an ordinary man, and an extraordinary father. He has always told his son tall tales filled with beauty, love and imagination but when his son confronts him about what is truth and what is fiction, they go on a life-affirming journey that will change them forever.

SCHEDULE: Monday – Saturday. Dark Sunday.

VENUE: The Other Place, Palace Street, SW1E

01 November to 31 December.

Nearest Tube: Victoria

MUSICAL



THE BIRTHDAY PARTY

Stanley Webber is the only lodger at Meg and Petey Boles' sleepy seaside boarding house. The unsettling arrival of enigmatic strangers disrupt their, and mundanity soon becomes menace when a seemingly innocent birthday party turns into a disturbing nightmare. Pinter's dark-comic masterpiece stars Toby Jones, Stephen Mangan, Zoë Wanamaker and Pearl Mackie.

SCHEDULE: Monday – Saturday. Dark Sunday.

VENUE: Harold Pinter Theatre, Panton Street, SW1Y

09 January to 14 April.

Nearest Tube: Piccadilly Circus

PLAY



THE BOOK OF MORMON

Winner of 4 Oliviers and 9 Tony Awards, including Best Musical! Vogue says "it's the funniest musical of all time." The New York Times says "it's the best musical of this century." It's the Broadway phenomenon from 'South Park' creators Trey Parker and Matt Stone and 'Avenue Q' co-creator Robert Lopez. Time Out New York calls it "musical comedy heaven."

SCHEDULE: Monday – Saturday. Dark Sunday.

VENUE: Prince of Wales Theatre, Coventry Street, W1

Nearest Tube: Piccadilly Circus

MUSICAL



THE COMEDY ABOUT A BANK ROBBERY

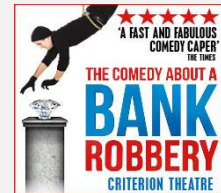
One giant diamond. Eight incompetent crooks. And a security guard asleep on the job. What could possibly go right? Written by and starring the Mischief Theatre Company (who brought you the 2015 Olivier award-winning Best New Comedy "The Play That Goes Wrong"), be entertained by their unique brand of humour in this hilarious new show. It would be criminal to miss it.

SCHEDULE: Tuesday – Sunday. Dark Monday.

VENUE: Criterion Theatre, Piccadilly Circus, W1

Nearest Tube: Piccadilly Circus

COMEDY



DREAMGIRLS

Thirty-five years after the ground-breaking original Broadway production, DREAMGIRLS transports you to a revolutionary time in American music history, inspired by R&B music acts of the 1960s, charting the tumultuous journey of a young female singing trio, from Chicago, Illinois called 'The Dreams', as they learn the hard lesson that show business is as tough as it is fabulous.

SCHEDULE: Monday – Saturday. Dark Sunday.

VENUE: Savoy Theatre, The Strand, WC2

Nearest Tube: Charing Cross

MUSICAL



DR. SEUSS' THE LORAX

This dazzlingly funny, moving and inspiring show sees the go-getting Once-ler come face to face with the magical Lorax in a battle over the beloved truffula trees and the whole of Paradise Valley. An Olivier-nominated Best Entertainment and Family Show, is a brilliant riot of eye-popping colour, gorgeous puppetry and infectious music to enchant adults and children alike.

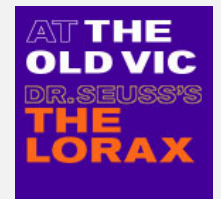
SCHEDULE: Monday – Saturday. Dark Sunday.

VENUE: Old Vic Theatre, The Cut, SE1

From 15 October to 05 November.

Nearest Tube: Waterloo

MUSICAL



EVERYBODY'S TALKING ABOUT JAMIE

Jamie New is sixteen and lives on a council estate in Sheffield. Jamie doesn't quite fit in. Is terrified about the future. Is going to be a sensation. Supported by his brilliant loving mum and surrounded by his friends, Jamie overcomes prejudice, beats the bullies and steps out of the darkness, into the spotlight. Fearless, funny, fabulous - a coming-of-age story with a twist!

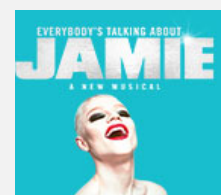
SCHEDULE: Monday – Saturday. Dark Sunday.

VENUE: Apollo Theatre, Shaftesbury Ave, W1D

From 06 November.

Nearest Tube: Piccadilly Circus

MUSICAL



WHAT'S ON

LONDON 2017-2018

THE EXORCIST

William Peter Blatty's best-selling novel is unleashed onto the West End stage for the very first time in a uniquely theatrical experience directed by award-winning film and theatre director Sean Mathias. Please note: This production contains material which may shock and offend. Recommended age guidance 18+.

SCHEDULE: Monday – Saturday. Dark Sunday.

From 19 October.

VENUE: Phoenix Theatre, Charing Cross Road, WC2H Nearest Tube: Charing Cross

PLAY



THE FERRYMAN

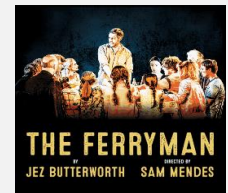
Jez Butterworth's epic new play transfers to the West End, directed by Academy Award winner Sam Mendes. Rural Derry, 1981. The Carney farmhouse is a hive of activity with preparations for the annual harvest. A day of hard work on the land and a traditional night of feasting and celebrations lie ahead. But this year they will be interrupted by a visitor.

SCHEDULE: Monday – Saturday. Dark Sunday.

Nearest Tube: Piccadilly Circus

VENUE: Gielgud Theatre, Shaftesbury Road, W1D

PLAY



FROZEN

One sunny evening a young girl walks to visit her Grandma, she never arrives. A play about retribution, remorse and redemption, Frozen explores the interwoven lives of three strangers as they try to make sense of the unimaginable. Bryony Lavery's award-winning psychological thriller about a mother whose child goes missing.

SCHEDULE: Monday – Saturday. Dark Sunday.

09 February to 05 May.

VENUE: Theatre Royal Haymarket, Haymarket, SW1Y Nearest Tube: Piccadilly Circus

PLAY



FIVE GUYS NAMED MOE

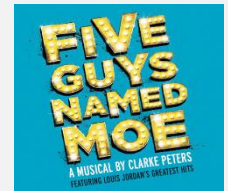
Nomax is down on his luck. Newly single and broke, he drinks his sorrows away. But in a wild night that he'll never forget, five guys named Moe are on hand to help him party his way back to the straight and narrow. Packed with an uplifting soundtrack of soul, blues, gospel and r'n'b, it's a life-affirming theatrical experience like no other.

SCHEDULE: Monday – Saturday. Dark Sunday.

Nearest Tube: Hyde Park Corner

VENUE: Marble Arch Theatre, Marble Arch, W1C

MUSICAL



GLENGARRY GLEN ROSS

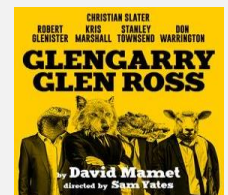
Christian Slater stars in David Mamet's masterpiece. Pitched in a high-stakes competition against each other, four increasingly desperate Chicago salesmen will do anything, legal or otherwise, to sell the most real estate. As time and luck start to run out, the mantra is simple: close the deal and you've won a Cadillac; blow the lead and you're f****d.

SCHEDULE: Monday – Saturday. Dark Sunday.

26 October to 03 February.

VENUE: Playhouse Theatre, Northumberland, WC2N Nearest Tube: Embankment

PLAY



HEISENBERG: THE UNCERTAINTY PRINCIPLE

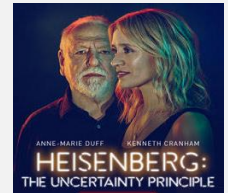
Tony and Olivier-winning director Marianne Elliott and playwright Simon Stephens, a surprising and life-affirming new play starring Anne-Marie Duff and Kenneth Cranham. In this uncertain world, who can predict what brings people together? When two strangers meet by chance amidst the bustle of a crowded London train station, their lives are changed forever.

SCHEDULE: Monday – Saturday. Dark Sunday.

Through 06 January.

VENUE: Wyndham's Theatre, Charing Cross Rd, WC2H Nearest Tube: Leicester Square

PLAY



INK

Fleet Street. 1969. The Sun rises. A young and rebellious Rupert Murdoch asks the impossible and launches The Sun's first editor's quest: to give the people what they want. No matter the cost. Bertie Carvel and Richard Coyle star in James Graham's ruthless, red-topped new play exploring the birth of this country's most influential newspaper.

SCHEDULE: Monday – Saturday. Dark Sunday.

Through 06 January.

VENUE: Duke of York's Theatre, St. Martin's Ln, WC2 Nearest Tube: Piccadilly Circus

PLAY



WHAT'S ON

LONDON 2017-2018

KINKY BOOTS

MUSICAL

This Olivier and Tony-winning hit musical is a joyous celebration about the friendships we discover, the families we make and the belief that you can change the world when you change your mind. From a gentlemen's shoe factory in Northampton to the glamorous catwalks of Milan, feel the elation, and cheer on the characters and learn that sometimes the best way to fit in is to stand out...

SCHEDULE: Monday – Saturday. Dark Sunday.

VENUE: Adelphi Theatre, Strand, WC2R

Nearest Tube: Covent Garden



LABOUR OF LOVE

COMEDY

Labour MP David Lyons cares about modernisation and "electability." Jean Whittaker cares about principles and her community. Set away from the Westminster bubble in the party's traditional northern heartlands, this is a clash of philosophy, culture and class against the backdrop of the Labour Party as it moves from Kinnock through Blair into Corbyn... and beyond?

SCHEDULE: Monday – Saturday. Dark Sunday.

Through 02 December.

VENUE: Noel Coward Theatre, St. Martin's Lane, WC2 Nearest Tube: Leicester Square



LES MISÉRABLES

MUSICAL

Cameron Mackintosh's legendary production of *Les Misérables* is indisputably the world's most popular musical. This international award-winning show sweeps its audience through an epic tale of passion and power set against the backdrop of a nation in the grip of revolution. A spectacular adaptation of Victor Hugo's masterpiece novel, *Les Misérables* continues to thrill audiences night after night.

SCHEDULE: Monday – Saturday. Dark Sunday.

VENUE: Queen's Theatre, Shaftesbury Avenue, W1 Nearest Tube: Piccadilly Circus



THE LION KING

MUSICAL

Set against the majesty of the Serengeti Plains and to the evocative rhythms of Africa, Disney's beloved film has been transformed into a spectacular theatrical experience that explodes with glorious colours, stunning effects and enchanting music. At its heart is the powerful and moving story of Simba, and his epic journey from wide-eyed cub to his destined role as the King of the Pridelands.

SCHEDULE: Tuesday – Sunday. Dark Monday.

VENUE: Lyceum Theatre, Wellington Street, WC2 Nearest Tube: Covent Garden



LONG DAY'S JOURNEY INTO NIGHT

PLAY

The Tyrones' summer home, August 1912. Haunted by the past but unable to face the truth of the present, the Tyrones and their two sons test the bonds of a family caught in a cycle of love and resentment. As day turns to night and the family indulge in their vices, the truth unravels leaving behind a quartet of ruined lives. Eugene O'Neill's masterpiece stars Jeremy Irons and Lesley Manville.

SCHEDULE: Tuesday – Sunday. Dark Monday.

27 January to 08 April 2018.

VENUE: Wyndham's Theatre, Charing Cross Rd, WC2H Nearest Tube: Leicester Square



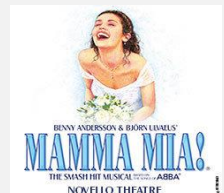
MAMMA MIA!

MUSICAL

Set on a Greek island paradise, a story of love, friendship and identity is cleverly told through the timeless songs of Abba, including "Dancing Queen", "Take A Chance On Me" and "Super Trouper". Sophie's quest to discover the father she's never known brings her mother face to face with three men from her distant romantic past on the eve of a wedding they'll never forget!

SCHEDULE: Monday – Saturday. Dark Sunday.

VENUE: Novello Theatre, Aldwych, WC2 Nearest Tube: Covent Garden



MARY STUART

PLAY

Two queens. One in power. One in prison. It's all in the execution. Schiller's political tragedy takes us behind the scenes of some of British history's most crucial days. Playing both Elizabeth I and Mary Stuart, Juliet Stevenson (Hamlet) and Lia Williams (Orestea) trade the play's central roles, decided at each performance by the toss of a coin.

SCHEDULE: Monday – Saturday. Dark Sunday.

From 13 January.

VENUE: Duke of York's Theatre, St. Martin's Ln, WC2 Nearest Tube: Piccadilly Circus



WHAT'S ON

LONDON 2017-2018

MATILDA THE MUSICAL

MUSICAL

Matilda The Musical is the multi-award winning musical from the Royal Shakespeare Company, inspired by the beloved book by the incomparable Roald Dahl. With book by Dennis Kelly and original songs by Tim Minchin, Matilda The Musical tells the tale of an extraordinary girl who is determined to change her own story, even if it means being a little bit naughty...

SCHEDULE: Tuesday – Sunday. Dark Monday.

VENUE: Cambridge Theatre, Earlham Street, WC2H Nearest Tube: Covent Garden



MOTOWN THE MUSICAL

MUSICAL

Motown founder Berry Gordy went from featherweight boxer to heavyweight music mogul, discovering and launching the careers of Diana Ross and the Supremes, Michael Jackson and the Jackson 5, Stevie Wonder, Smokey Robinson and the Miracles, Marvin Gaye and many more. Featuring an 18-piece orchestra playing 50 Motown tracks, Motown The Musical is a musical sensation with real soul.

SCHEDULE: Monday – Saturday. Dark Sunday.

VENUE: Shaftesbury Theatre, Shaftesbury Ave., WC2 Nearest Tube: Tottenham Ct Rd.



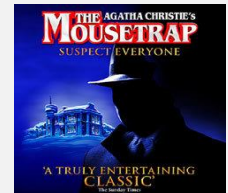
THE MOUSETRAP

PLAY

Agatha Christie's legendary production has kept audiences guessing for over six decades. A group of people at a country guest house in Monkswell Manor. Cut off by the snow, they discover there is a murderer in their midst. Who can it be? One by one the suspicious characters reveal their sordid pasts until at the last, nerve-shredding moment the identity and the motive are finally revealed...

SCHEDULE: Monday – Saturday. Dark Sunday.

VENUE: St Martin's Theatre, West Street, WC2 Nearest Tube: Leicester Square



OSLO

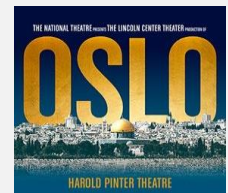
PLAY

Direct from a critically acclaimed Tony-nominated engagement on Broadway! Discover the thrilling true story of people who risked everything for peace. 1993. Two maverick Norwegian diplomats try to coordinate top secret talks in a castle in the middle of a forest outside Oslo. Their quiet heroics will lead them into the heart of one of the world's longest running conflicts.

SCHEDULE: Monday – Saturday. Dark Sunday.

Through 30 December.

VENUE: Harold Pinter Theatre, Panton Street, SW1Y Nearest Tube: Piccadilly Circus



THE PHANTOM OF THE OPERA

MUSICAL

Far beneath the majesty and splendour of the Paris Opera House, the love the Phantom holds for his beautiful protégée Christine Daaé is so strong that even her heart cannot resist. Andrew Lloyd Webber's mesmerising and unforgettable score, and the jaw-dropping scenery and breathtaking special effects, magically bring to life the legendary love story.

SCHEDULE: Monday – Saturday. Dark Sunday.

VENUE: Her Majesty's Theatre, Haymarket, SW1Y Nearest Tube: Piccadilly Circus



THE PLAY THAT GOES WRONG

COMEDY

This 2015 Olivier Award Winner for Best New Comedy is guaranteed to leave you aching with laughter! The Cornley Polytechnic Drama Society are putting on a 1920s murder mystery, but as the title suggests, everything that can go wrong... does! The accident-prone thespians battle against all odds to make it through to their final curtain call, with hilarious consequences!

SCHEDULE: Monday – Saturday. Dark Sunday.

VENUE: Duchess Theatre, Catherine Street, WC2 Nearest Tube: Covent Garden



SCHOOL OF ROCK

MUSICAL

School of Rock, the hit Broadway musical from Andrew Lloyd Webber, is now rocking the West End! Dewey Finn, a failed, wannabe rock star, decides to earn an extra bit of cash by posing as a supply teacher at a prestigious prep school. There he turns a class of straight-A pupils into a guitar-shredding, bass-slapping, mind-blowing rock band. School of Rock is a musical treat for all ages!

SCHEDULE: Wednesday – Monday. Dark Tuesday.

VENUE: New London Theatre, Drury Lane, WC2 Nearest Tube: Holborn / Covent Garden



WHAT'S ON

LONDON 2017-2018

STOMP

Now in its second sensational decade in London, rhythm, theatre, comedy and dance come together this unstoppable smash hit! Eight performers use everything from Zippo lighters, plastic bags, bin lids and even the kitchen sink to hammer out an explosively feel good beat. With fresh new routines and mind-blowing new moves, expect to be amazed!

SCHEDULE: Thursday – Monday. Dark Tuesday and Wednesday.

VENUE: Ambassadors Theatre, West Street, WC2 Nearest Tube: Leicester Square

EVENT



STRICTLY BALLROOM

Based on Baz Luhrmann's hit movie, this musical production is a kaleidoscope of colour and fun. Maverick championship ballroom dancer Scott defies all the rules of competition to follow his heart and teams up with left-footed partner Fran to win his way. Includes the film's classic break-into-song numbers Love is in the Air, Perhaps Perhaps Perhaps and Time After Time.

SCHEDULE: Monday – Saturday. Dark Sunday.

From 16 March.

VENUE: Piccadilly Theatre, Denman Street, W1 Nearest Tube: Piccadilly Circus

MUSICAL



THRILLER - LIVE

The wonderful career of the world's greatest entertainer - Michael Jackson - is celebrated like never before, with this amazing show, featuring a full company of singers, dancers and live band. Boogie on down as the cast belts out song after song from the early Motown and Jackson 5 days right up to the solo successes with dance sequences that are simply breath-taking.

SCHEDULE: Tuesday – Sunday. Dark Monday.

VENUE: Lyric Theatre, Shaftesbury Avenue, W1 Nearest Tube: Piccadilly Circus

MUSICAL



VENUS IN FUR

Enigmatic actress Vanda Jordan appears unannounced for an audition with director Thomas Novachek. She's determined to land the leading role in his new production - despite seeming wrong for the part. Over one evening in downtown Manhattan their charged meeting becomes a seductive dance to the end. Starring Natalie Dormer and David Oakes.

SCHEDULE: Monday – Saturday. Dark Sunday.

Through 09 December.

VENUE: Theatre Royal Haymarket, Haymarket, SW1Y Nearest Tube: Piccadilly Circus

PLAY



WICKED

Based on the acclaimed novel that ingeniously re-imagined the stories and characters in 'The Wonderful Wizard of Oz', Wicked tells the incredible untold story of an unlikely but profound friendship between two sorcery students. Their extraordinary adventures in Oz will ultimately see them fulfil their destinies as Glinda The Good and the Wicked Witch of the West.

SCHEDULE: Monday – Saturday. Dark Sunday.

VENUE: Apollo Victoria Theatre, Wilton Road, SW1 Nearest Tube: Victoria

MUSICAL



THE WOMAN IN BLACK

Since 1989, millions of theatregoers have lived to tell the tale of one of the most exciting, spooky, gripping and successful theatre events ever staged. The Woman In Black is a gripping theatrical exploration of terror, 'a masterpiece' (The Guardian) that's been thrilling audiences of all ages with its unique blend of suspense, drama and bold stagecraft.

SCHEDULE: Tuesday – Saturday. Dark Sunday.

VENUE: Fortune Theatre, Russell Street, WC2 Nearest Tube: Covent Garden

PLAY



A WOMAN OF NO IMPORTANCE

Olivier winner Eve Best stars in Oscar Wilde's classic, directed by Dominic Dromgoole. An earnest young American woman, a louche English lord, and an innocent young chap join a house party of fin de siecle fools and grotesques. Nearby a woman lives, cradling a long buried secret. Wilde's marriage of glittering wit and Ibsenite drama create a vivid new theatrical voice...

SCHEDULE: Monday – Saturday. Dark Sunday.

Through 30 December.

VENUE: Vaudeville Theatre, Strand, WC2R Nearest Tube: Charing Cross

PLAY



WHAT'S ON

LONDON 2017-2018

YOUNG FRANKENSTEIN

Legendary filmmaker and comedian Mel Brooks brings his classic monster musical comedy Young Frankenstein to life on stage in an all-singing, all-dancing musical collaboration with Tony-award winning Broadway director and choreographer Susan Stroman, based on the hilarious Oscar-nominated smash hit movie that starred Gene Wilder.

SCHEDULE: Monday – Saturday. Dark Sunday.

VENUE: Garrick Theatre, Charing Cross Rd., WC2

Nearest Tube: Leicester Square

MUSICAL

